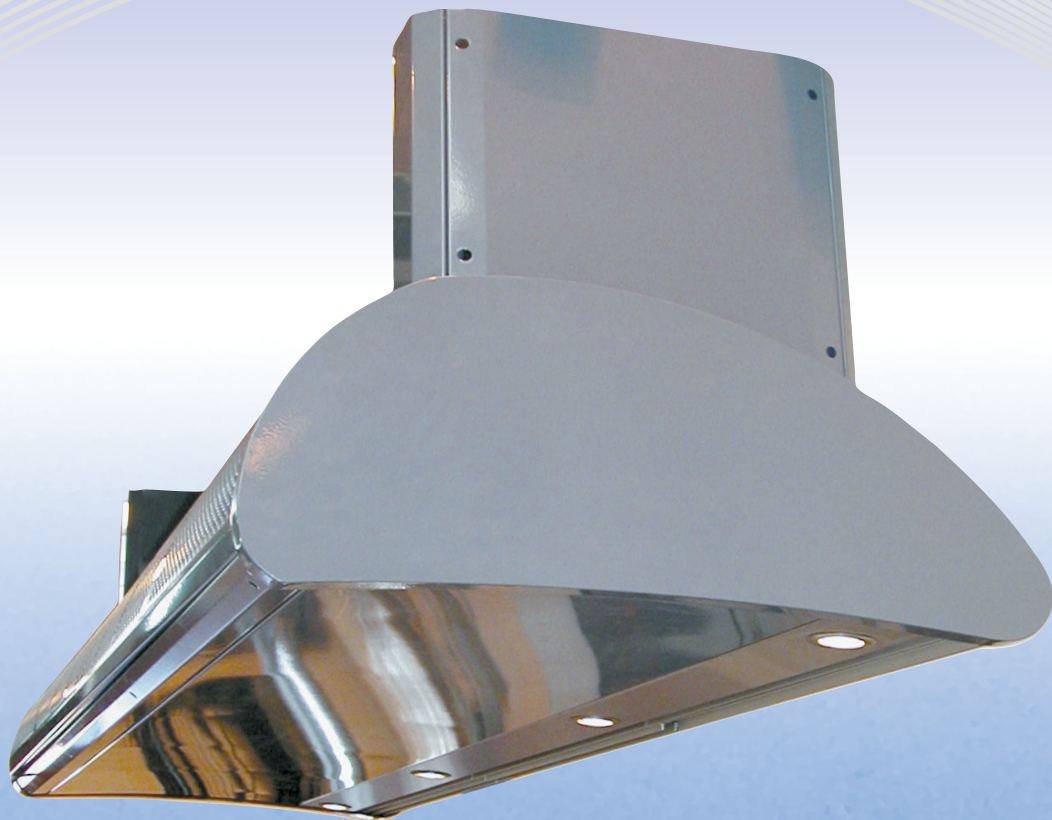


# Design air curtain **MAGNUM**

[www.revo-air.nl](http://www.revo-air.nl)



- **Silent running**
- **Ergonomic design**
- **Lighting of the door space**
- **Painted or stainless steel finish**
- **Self-contained construction of round shapes**

**revo** **AIR**

## CONSTRUCTION DESCRIPTION

**M**odern self-contained curved construction powder coated to RAL 9007 (other colours available) or finished in stainless steel.

**T**he acoustically isolated outlet chamber of the air curtain ensures significant noise reduction.

**H**igh efficiency coils manufactured in Cu/Al, tested to a maximum pressure of 1.6 MPa, for low medium temperature (60/30°C) can be delivered power-strengthened heaters.

**D**ynamically and statically balanced fans with high capacity and very silent running with inbuilt overload protection.

**A**t the heat exchanger are inbuilt sludge valves, exhaust air is temperature regulated via an inbuilt 3-way thermo-electric valve (if specified), equipped as standard with EU2 quality filters.

**S**tandard electric heaters with 3-grades of heating bars are equipped with serpentines with stainless steel braiding for effective bar cooling, protective and operating elements secure troublefree running incl. complete electro equipage.

	MAGNUM 10X   100   101	MAGNUM 15X   150   151	MAGNUM 20X   200   201	MAGNUM 25X   250   251
<b>PLACING</b>	horizontal	horizontal	horizontal	horizontal
Max. height of installation „W“ [m]	2,2   2,4   5,5	2,2   2,4   2,5	2,3   2,5   2,6	2,3   2,5   2,6
Max. height of installation „E“ [m]	2,2   2,5   2,8	2,2   2,5   2,8	2,3   2,6   2,8	2,4   2,6   2,7
<b>DIMENSIONS</b>				
Height [mm]	320	320	320	320
Width [mm]	690	690	690	690
Length [mm]	1000	1500	2000	2470
<b>TECHNICAL PARAMETRES</b>				
Air-handling capacity „W“ [m³/h]	1550   1680   1880	2495   2630   3070	3800   3925   4230	4300   4750   5225
Air-handling capacity „E“ [m³/h]	1600   1840   2610	2500   2780   3680	3760   4335   4650	4700   5100   5520
Hot water air curtains-heater 80/60°C max. capacity* [kW]	13,5   14,1   15,1	23,3   24,0   26,3	34,4   35,1   36,7	40,3   42,8   45,3
60/40°C max. capacity* [kW]	7,6   7,9   8,5	13,4   13,7   15,1	19,5   19,9   20,8	22,5   23,9   25,2
Electric air curtains-heater 400V capacity** [kW]	9   9   12	15   15   18	15   18   24	18   24   27
Fan power supply [V]	230	230	230	230
Fan power input „W,E“ [kW]	0,51   0,51   0,77	0,77   0,77   1,02	1,28   1,28   1,28	1,28   1,53   1,53
Fan rated current „W,E“ [A]	2,3   2,3   3,4	5,6   6,8   4,5	5,6   5,6   5,6	5,6   6,8   6,8
Degree of protection	IP 20	IP 20	IP 20	IP 20

\* ) at suction t = 18°C

• \*\*) on customer wish it is possible to modify the capacity of electric heater



◆ Design adapters for wall or underceiling mounting, perfect harmonized with the design of air curtain.



◆ Very low building height of the unit.



◆ Maximum energy savings can be achieved through optimal setting of the moveable blades. Halogen lighting is fitted as standard next to the outlet nozzle, which is activated when the air curtain is operating.

## AIR CURTAIN'S EQUIPAGE MAGNUM

HOT WATER AIR CURTAINS		ELECTRIC AIR CURTAINS	
Air curtain's lighting	serial	Air curtain's lighting	serial
Manual or automatic running	serial	Manual or automatic running	serial
Regulation according to room or outlet air temperature	serial	Regulation according to room or outlet air temperature	serial
Sludge valve		3-grades electric heater	
deaerating valve	serial	contolled by processor	serial
Acoustic outlet isolations	serial	Acoustic outlet isolation	serial
Moveable outlet design blades	serial	Moveable outlet design blades	serial
Inbuilt electrothermic valve	serial	Fan delay after the unit switching-off	serial



◆ Unit running is fully controlled via wall processor control. The control allows connection of wide range of accessories incl. possible control from BMS or wireless control (see catalogue list Ditrionic).

**Representative:**



**Revo-air**

Rheestraat 27, 5047 TL Tilburg

Tel: +31 (0) 13 545 02 22, Fax: +31 (0) 13 545 02 20

email: info@revo-air.nl, www.revo-air.nl